

# Fairview

LIVEWELL HOMES

## CLASSIC SERIES

### FEATURES

- 1,822 - 3,193+ sq ft
- 3 - 6 Bedrooms
- 2.5-4 Bathrooms
- Master Suite on First Floor
- Optional Mud Room

CHOOSE  
FROM  
**MANY**  
EXTERIOR  
DESIGNS



**FOR A COMPLETE OPTION LIST, PLEASE CONTACT A LIVEWELL HOMES SALES AGENT**

Illustrations and specifications are believed to be correct at time of publication, and are not intended to create any warranty or contract rights. All dimensions are approximate and used for illustrative purposes only. Please see Sales Representative for details on exterior designs and options. Square footage calculations based on options chosen. LiveWell Homes reserves the right to make changes without notice or obligation. Vinyl, partial brick, and full brick exterior designs available. Foundation and exterior design availability vary by neighborhood. 12/14

  
**LiveWell Homes**

THE BEST THINGS IN LIFE BUILT INTO YOUR HOME

501 SPRINGCREST DRIVE • FORT MILL, SC 29715 • LIVEWELLHOMES.NET

# Fairview 1822

## PLAN



LiveWellHomes

THE BEST THINGS IN LIFE BUILT INTO YOUR HOME



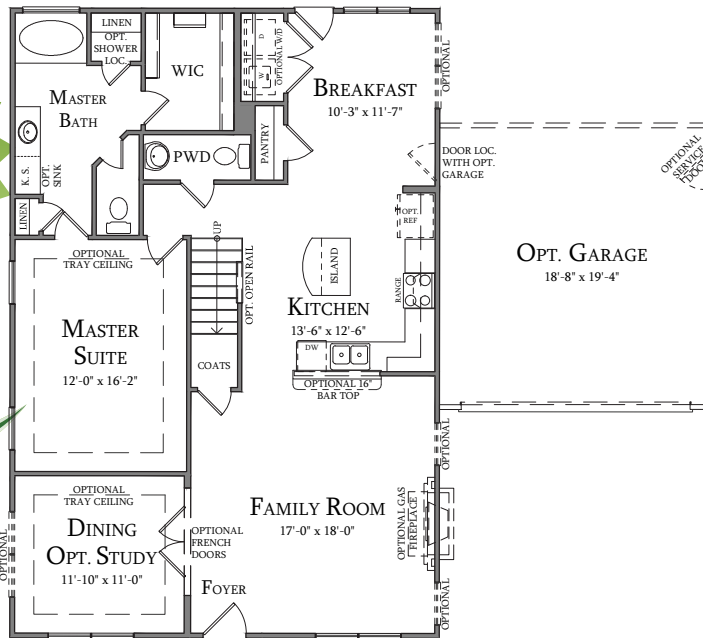
Master Bath With Shower



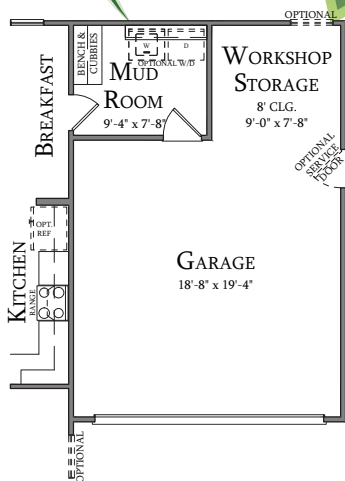
Large Master Suite Down



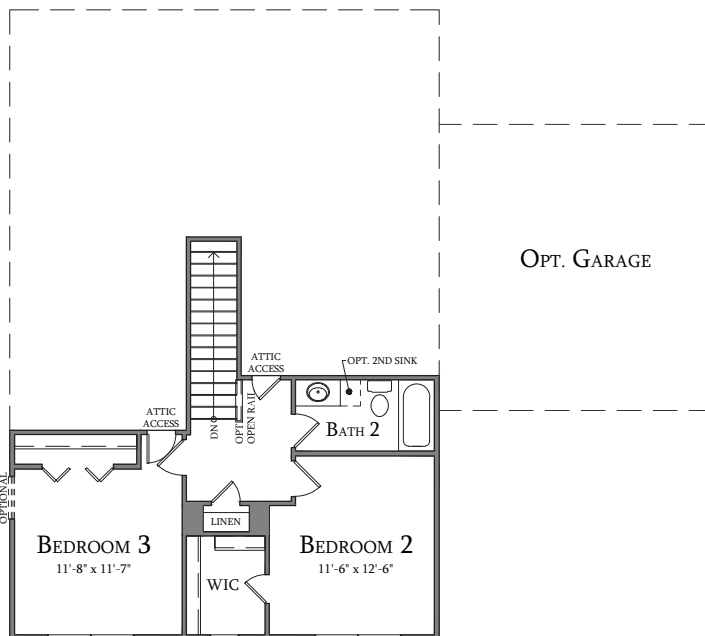
Optional Mud Room



First Floor Plan



Mud Room & Workshop/Storage



Second Floor Plan



OPTIONS AVAILABLE - ASK FOR DETAILS!